

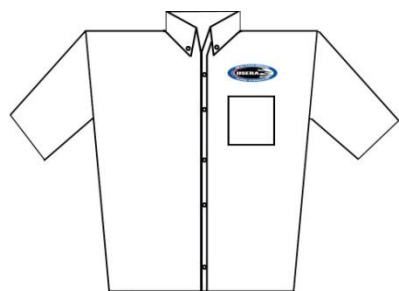


2012 USERA SPEC MIATA

DECAL AND PATCH PLACEMENT DIAGRAM Current as of January 1, 2012. SUBJECT TO REVISION.

Per USERA Rules, decals and patches are **REQUIRED** to be placed as defined in this diagram.

Rendering of Miata is for decal placement visualization only.



Required Patches:

USERA: Front Right or Left
(Over Pocket Preferred)

Required Decals:

USERA:

Left Side, Right Side and Front as shown. Note that there are LEFT and RIGHT versions (flames point to rear). Either decal may be used on the nose.

NUMBERS:

8" or larger each side. Hood and rear numbers may be placed anywhere provided they are easy to see from ground level.

CLASS:

"SM" on each side of car.

Optional Decals:

MAZDA:

Per Mazdaspeed Contingency.

MAZDASPEED:

Per Mazdaspeed Contingency.

Contingency Decals:

Per Contingency Program Instructions.